



L'ARCHE® TAHOMA HOPE

SOUNDINGS

Volume 24, Issue 2

Summer 2012

Celebrating 35 Years, by Stacy Cates-Carney, Community Leader/Executive Director



"Being in L'Arche does not mean following an ideal or practicing a certain philosophy.

Being in L'Arche means being part of a history that already exists; it means belonging to a people. Throughout our history we have tried to discern the signs of God and the Spirit's ways for L'Arche.

We are a people on a journey, walking in insecurity but certain that God is watching over us. It is up to us to be attentive to God and open to the future, and to accept challenges humbly so that our lives remain centered on what is essential to our community life."

~ Jean Vanier, from the introduction to An Ark for the Poor: The Story of L'Arche

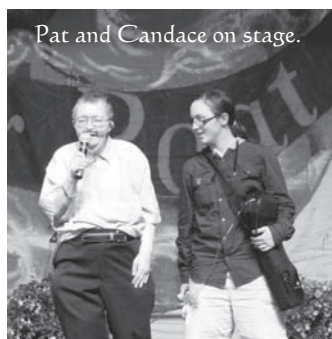
On July 28th, we gathered as community members, family and friends to celebrate 35 years of life at L'Arche Tahoma Hope. The words above were read as part of our time of liturgy and prayer. It was a day of prayer, feasting and stories....of remembering our history and celebrating our belonging.

We began our day with a liturgy that spoke to the simple truth of our community life – God is with us and trust in God is at the heart of our journey together. The opening song for our liturgy spoke to the spirit of the day and our life at L'Arche, *"Built of tears and cries and laughter, prayers of faith and songs of grace..."*

After the liturgy we had a fabulous potluck of assorted salads, sandwiches and pies. It wouldn't be a L'Arche celebration without sharing a meal together! Surrounding the edges of our dining area were images and words of gratitude crafted by community members as well as photos from the past 35 years.

We topped off our day together with a variety show which proved to be a remarkable celebration of what our community has meant to its members and friends. Our MC's were the spirits of L'Arche Past, Present and Future. There were songs, skits, stories ...and lots and lots of laughter.

We extend much thanks to all those who were able to join us, for those who worked to create a grace-filled day and to Bellarmine Preparatory School for providing us the space that made it possible. We are indeed a people on a journey, walking in insecurity, but continuing to trust that God is watching over us.



Pat and Candace on stage.



Anawim-ers



Our MC's from the past, present and future.

L'Arche International Gathering in Atlanta

by Teresa Hershberger and Leana Shiu, Tahoma Hope's Delegates

Fried chicken, collard greens, peaches, sunshine and mosquitoes! The week in Atlanta at the International L'Arche Gathering was full of all these things for Leana and me. It was also full of song, celebration, prayer, conversation, and connecting with others around the world that are passionate about the mission of L'Arche.

At this gathering, we said "thank you" to Jean Christophe Pascal and Christine McGreevy who had served as our international leaders for 12 years. We also welcomed Patrick Fontaine and Eileen Glass who will fill these roles for the next 5 years and lead us in the new mandate we voted on.

Here are some of Leana's thoughts on the week:

How was the home stay for you?

Leana: It was ok.

What did you do?

Leana: Pool party

Did you feel like you could connect with the story of Martin Luther King?

Leana: Yeah. About dreams.

Do you have dreams?

Leana: Yeah.

Want to share?

Leana: Uhh no.

What has stuck with you from Atlanta?

Leana: Being centered.

What in Atlanta inspired you to get centered?

Leana: Meditations in the workshop.

What were the days like?

Leana: Packed (big smile).

How were the gatherings?

Leana: Yikes! Nurvy. So many people!!!

Did you ever get used to being with so many people?

Leana: Yea. Towards the end.

Did you get to make connections with people?

Leana: Uh huh.

Leana and Teresa



Did Atlanta help you grow in your sense of belonging in L'Arche?

Leana: Mmmhmmm – I think so.

We both agree that it was a big week for us. We were given the opportunities to connect directly with the bigger picture of L'Arche, meet new friends, and enter into countless conversations around the direction of L'Arche and the gifts and struggles of being in it day after day.

One day our host family took us to the Martin Luther King Jr. Center in downtown Atlanta. Hanging on the wall was a quote of his that said "Faith is taking the first step, even when you don't see the whole staircase." We automatically connected this to a philosophy that Leana has lived her life by for the last few years - "Bird by Bird. (a wise mantra from Anne Lamott). We spent a lot of time talking about our own dreams during our week in Atlanta and were struck by MLK Jr.'s call to trust that by taking the step directly in front of us, we will end up exactly where we need to be; that this is the faith that will bring dreams into reality.

We remain full of inspiration to share with the community and gratitude for the gift of being sent to be part of such a beautiful and inspiring gathering of friends.

Thoughts on the General Assembly from L'Arche International Meeting Ground Newsletter

L'Arche invites each of us to risk transformation: opening up the way we see each other, through becoming a friend of a person who is different. Such friendships change us radically, altering our image of God. They offer a way of hope for the world. But L'Arche cannot possibly get this message out on our own: we need many partners who say, 'I am happy to spread this message with you.' One such partner is Katharine Jefferts Schori, Presiding Bishop of the US Episcopal Church, who shared Atlanta with us, and then told her Church of her renewing experience. This is what she says:

"I was at the international gathering of L'Arche last week in Atlanta. There were L'Arche members from more than a hundred local communities in 37 or 38 nations. L'Arche gathers intellectually disabled adults (core members) and non-disabled assistants to live together in community. It got its start as a Roman Catholic initiative, but there are a number of Episcopal and Anglican communities around the world, as well as from other faith traditions. A central focus of the ministry is developing a shared spiritual life in each community. During the international gathering there was a different denominational Eucharist each evening, and one evening of interfaith worship.

I had several lively conversations with people who told me about the spiritual life in different communities. The core members tend to have strongly developed spiritual lives and clear expectations about what life in community should include. Their assistants are often young adults who choose this life for a year or two, and many now come without any religious background at all. L'Arche has become a significant evangelical opportunity, offering a space in which to introduce these young people to community life as a place to wrestle with life's great questions and to develop enduring relationships with God and other human beings. It is a transformational experience for everyone involved."

Youth Service and L'Arche Tahoma Hope

For 35 years L'Arche Tahoma Hope has been a place where young people often have one of their first experiences with people with intellectual disabilities, community living, and service. Thousands of young people have spent time at L'Arche over the last 35 years as volunteers or assistants. For most, L'Arche will not be their life's calling, though for many of these young people experiences with L'Arche are transformative and have a significant impact on their life journey.



The two days that I was lucky enough to spend at L'Arche were the best I experienced this entire summer. Working along side the core team members was a breath of fresh air and an effective transformation for my perspective on hard work. The workers appeared to delight in every task at hand and their display of delight was infectious. ~ Participant in Trinity Lutheran HS (MN) Immersion Trip 2012



As a high school student I experience judgment everyday and I have learned from my friends at L'Arche that judgment is completely unnecessary. Although many of the core member workers at L'Arche have the same job everyday they approach whatever task they are given with great spirit. If they can do such small tasks with such great love, I should be able to do the same. I came into L'Arche with the mentality that I would be helping others but in just the first couple days I realized they would be the ones helping me. ~ Participant in St. Ignatius Prep (CA) Immersion Trip 2012



"I learned that great works aren't done in great leaps but in humbling ourselves and doing modest work in a community with care and passion and attention to certain details. And that doing God's work includes the nasty stuff and the 'lame' things too. Also that I am capable of pushing myself." ~ Student Volunteer



The day was fun. I have never worked on a Farm before but now I can tell people I did. ~ Tacoma Grade School Student

Pancake Breakfast Celebrating Youth Service and L'Arche Tahoma Hope

We invite all of you to join us **Saturday, October 20, 8am to noon** for a pancake breakfast at Bellarmine Prep's Student Center (2300 South Washington, Tacoma 98419) to celebrate the impact of youth service at L'Arche Tahoma Hope. We will eat heartily and hear heart-felt reflections of some of the young people who have touched and been touched by the L'Arche community.

We hope you and your family will join us. Donations will be accepted at the door.

2012 Community Vacations

Summer at L'Arche Tahoma Hope wouldn't be complete without our Annual Community Vacations. This year we had 5 groups traveling near and far, while the Farm took the chance to add more play than usual to their week! A huge thank you to everyone who helped make community vacations possible.



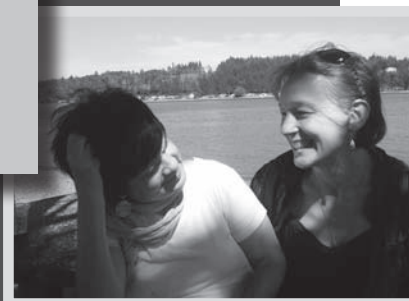
Our group took Bellingham by storm with a whirlwind week of activities! We enjoyed ferry rides, ice cream outings, go-kart racing, playing drums with a drum circle, and a night at the comedy club. Some of us relaxed at the park and the lavender fields, while others watched baseball at the bar and sampled some home-brewed Bellingham (root)beer. On our last evening, we all went out for a fancy dinner, where we ate delicious food and shared highlights of our vacation with one another.

Bellingham

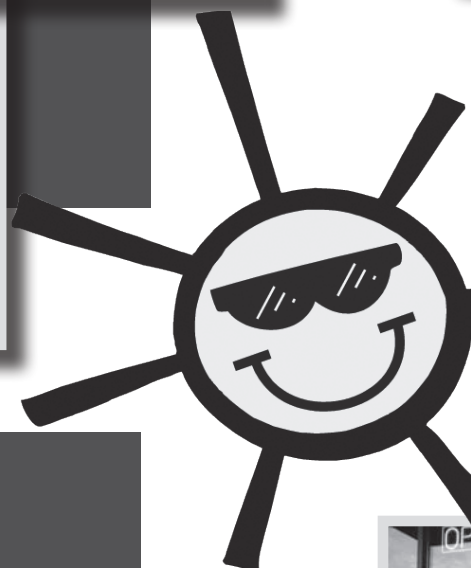


Grapeview

What an oasis! Tucked away in the rainforest, with views of the sand and Mt Rainier. Mornings started with a choice of coffee/ tea, watching the fog roll away from the sound or sleeping in, followed by daily trips into town. Starbucks! There was knitting in the park at Allyn; Spiderman in Bremerton; nail-spa, shopping and people watching at the mall in Olympia, farmers (*ahem* craft) market in Belfair; and chilling by the lake with a duck named "Cat". Then relaxing back "at home" with suppers on the deck and thunderstorm displays (watching from inside) - a wonderful week was had by all!



What a 'cashe!
Olympia with c
days were filled
in the farmer's
Tacoma friends
museumand m
Festival. We ha





The South Puget Sound vacation group enjoyed spending time at many hot spots around Tacoma. The group made the trek to the Point Defiance Zoo and Aquarium, spent a couple afternoons swimming, attended the Sumner rhubarb festival, feasted with many friends and family members, and enjoyed down time lounging in the Farmhouse back yard. In addition to lots of fun outings, the group also had several entertaining evenings at home, complete with Disney karaoke, games, bonfires, and even an Olympic torch lighting extravaganza. The playful spirit in the group was contagious.



South Puget Sound



Ocean Shores



Marshmallows, mosquito bites, swimming, sunning, relaxing, reading, movies, mini-golf... what's not to love about camping and staying at the ocean?! After hauling water for dishes while camping, we had a new appreciation for dishwashers! We had many great meals together, and even managed to catch some live music at an Irish pub while in Ocean Shores. Our group bonded over our love of magazines and, much to some of our surprise, the amount of fun that can be had in the great outdoors. As a group we day-hiked near the Flaming Geyser, and later in the week, we competed intensely in "Hungry, Hungry Hippos." Somehow, we even found plenty of time to kick-back and relax between all these amazing activities!



Chilling at a beautiful lake house outside a campfire and smores in the evening. Our group had fun with eating out and eating in, taking a walk to the market, enjoying Rainier's baseball with friends, exploring and building at the children's museum, and meeting Tow-Mater from Cars at the Bear Museum. We had to see it all end!

Olympia



Summer on the Farm...



With all the student groups visiting (see pg. 3) and all the flowers growing, it's hard for the Farm to shut down for vacations as well, but we do a good job of adding even more fun than usual into our days...



Choose a job you love, and you will never have to work a day in your life.

~Confucius

Markets We're at Each Week...

- **6th Ave Market:** 3:30 - 7:30, Tuesdays through Sept. 25th
- **Broadway:** 10:30 - 4, Thursdays through Oct. 25th (come early if you'd like)
- **Proctor:** 9am - 2pm, Saturdays through Dec. 22nd (check for winter hours)



Evergreen Wreaths
\$25.00 each

Preorder
yours today and get
\$5.00 off.
(Must order by Oct. 1st)

All of our arrangements are made from scratch using fresh local cedar and noble fir.

We will be making Christmas and Advent wreaths as well as door swags.

To place your order, email us at:
farm@larchetahomahope.org.

Holiday Sales at the Farm...

Holiday Cards and Ornaments
(crafted from our handmade paper)



Bulk orders can be made with advance notice. To place your order, email us at: farm@larchetahomahope.org.

Visit us on Facebook or at www.larchetahomahope.org to view samples of our wreaths and paper crafts.



L'ARCHE®
FARM & GARDENS
Growing People, Growing Plants

Join us for Our Annual

Harvestfest

October 6th, 2012 10am - 4pm

**FREE
EVENT!**

- Farm & Gardens' Fall Clearance Celebration
- Come for the deals, stay for the fun!
- Face painting & paper making to entertain the family while you shop.
- While you're out, you can place your order for our fresh evergreen wreaths and swags for the holidays (see pg. 8 for details).



Keep up on life at L'Arche between newsletters....

Visit us at www.larchetahomahope.org

Friend us on Facebook:



L'Arche Farm



L'Arche Tahoma Hope

YEE-HAWY'ALL!

It's an Old Fashioned Hoedown!



SATURDAY, OCTOBER 6TH • 6PM - 10PM

L'ARCHE FARM AND GARDENS

MUSIC * CHILI * DANCIN' * GOOD COMPANY



TICKETS ON SALE NOW! \$30/PERSON THIS IS AN ADULT-ONLY EVENT
(INCLUDES FOOD, DRINKS AND A BOOT SCOOTIN' GOOD TIME!!)

To purchase tickets online, go to www.larchetahomahope.org.

For more information, contact Mary at (253) 535-3178 or info@larchetahomahope.org

L'Arche Tahoma Hope Community

12303 36th Avenue East

Tacoma, Washington 98446

Non-Profit Org.
U.S. Postage
PAID
Tacoma, WA
Permit No. 1126

RETURN SERVICE REQUESTED

Soundings is published three times a year, Spring, Summer and Christmas.

L'Arche Tahoma Hope is a non-profit organization.

Your donations are tax-deductible.

Office

12303 36th Ave. E.
Tacoma, WA 98446
(253) 535-3178

Farmhouse

11716 Vickery Ave. E.
Tacoma, WA 98446
(253) 535-3171

Anawim

616 East 45th St.
Tacoma, WA 98404
(253) 474-5618

Ananda

12306 Vickery Ave. E.
Tacoma, WA 98446
(253) 537-5126

Hopespring

12319 - 36th Ave. E.
Tacoma, WA 98446
(253) 537-6936

Noah's Workshop

12319 - 36th Ave. E.
Tacoma, WA 98446
(253) 537-7540

Farm & Gardens

11716 Vickery Ave. E.
Tacoma, WA 98446
(253) 537-7871

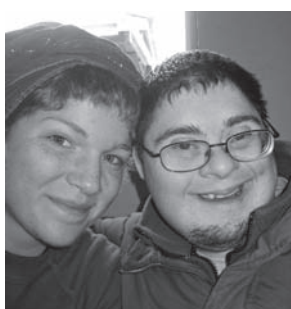
www.larchetahomahope.org

e-mail: **info@larchetahomahope.org**



The Mission of L'Arche is:

- To make known the gifts of people with developmental disabilities, revealed through mutually transforming relationships;
- To foster an environment in community that responds to the changing needs of our members, while being faithful to the core values of our founding story;
- To engage in our diverse cultures, working together toward a more human society.



Memorial Contributions

We are grateful for the donations we have received in memory of the following people. They, along with their families and friends, are in our prayers.

Fr. Jimmy Boyle

Joe Carbone

Molly McNerthney-Ross

We are also thankful for the donations we received in honor of:

Mark Drangstveit

Jim Raden

Save the Date...

L'Arche Tahoma Hope's 19th Annual Auction

March 2nd, 2013

at the Landmark Convention Center

hope to see you then!